

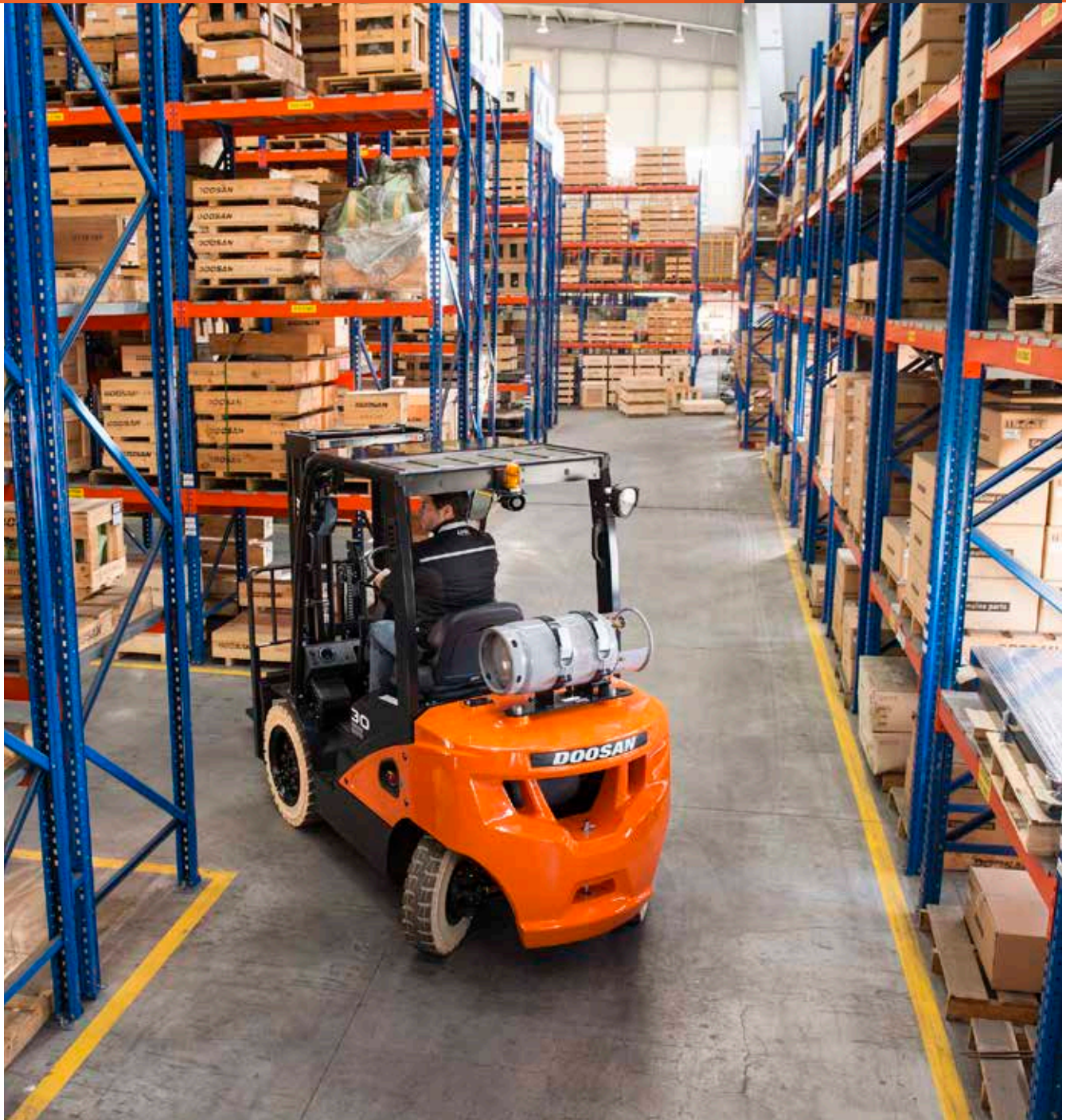
DOOSAN

G20/25/30/33E-7, G35EC-7

7-SERIES FORKLIFTS

Pneumatic LPG 2.0 to 3.5 tonne capacity

Euro Stage V



Features overview

Doosan's LPG 7-Series with its Euro Stage V compliant engine delivers industry-leading performance with its excellent travel speed and drawbar pull. A Doosan forklift is safe, has excellent operator comfort and is reliable in a variety of applications.

MAXIMUM PRODUCTIVITY

Powerful Euro Stage V engine

Oil-cooled disc brakes

SAFETY

Excellent visibility

Operator Sensing System

OPTIMAL ERGONOMICS

Tilt cylinder cover

Easy readable display

Adjustable steering column

Doosan full cabin

Spacious operator compartment



EXCELLENT RELIABILITY

Hydrostatic steer axle

Rigid steel engine hood

Maximised cooling capacity

Rigid drive-axle

GREAT SERVICEABILITY

Easy to service

Easy to remove floor plate & mat

Maximum Productivity



image can include optional equipment



2.4 Liter LPG Engine (HMC)

NEW

This engine includes a silent timing chain that aids in the reduction of noise levels and helps to improve efficiency. An aluminium cylinder block and oil pan also help to reduce noise. Additionally, fuel efficiency is increased thanks to the use of abrasion-resistant materials and specially designed 'beehive type/conical' valve springs.

Powershift transmission

The market-proven powershift transmission accurately modulates clutch oil pressure for smooth forward and reverse directional changes. This precision modulation prevents damage to the transmission and makes the forklift more durable.



Safety



Panoramic mirror **OPTION**

Provides the operator with a clear view of the rear working area, contributing to safety and efficiency.



Auto tilt levelling **OPTION**

By pressing a button on the tilting handle, the mast will automatically move to an upward position.



Seat belt sequence interlock **OPTION**

The truck will only be operational when the seat belt is fastened and secured.



Ground speed control **OPTION**

Have greater control by customising the speed limit of the truck. Varying speed limits can be applied for the forward drive and reverse drive.

image can include optional equipment

Blue safety light **OPTION**

Projects a blue spot on the floor to alert pedestrians.



Excellent visibility

The neatly arranged hydraulic hoses and chains create wide-front visibility while maintaining strength and rigidity.

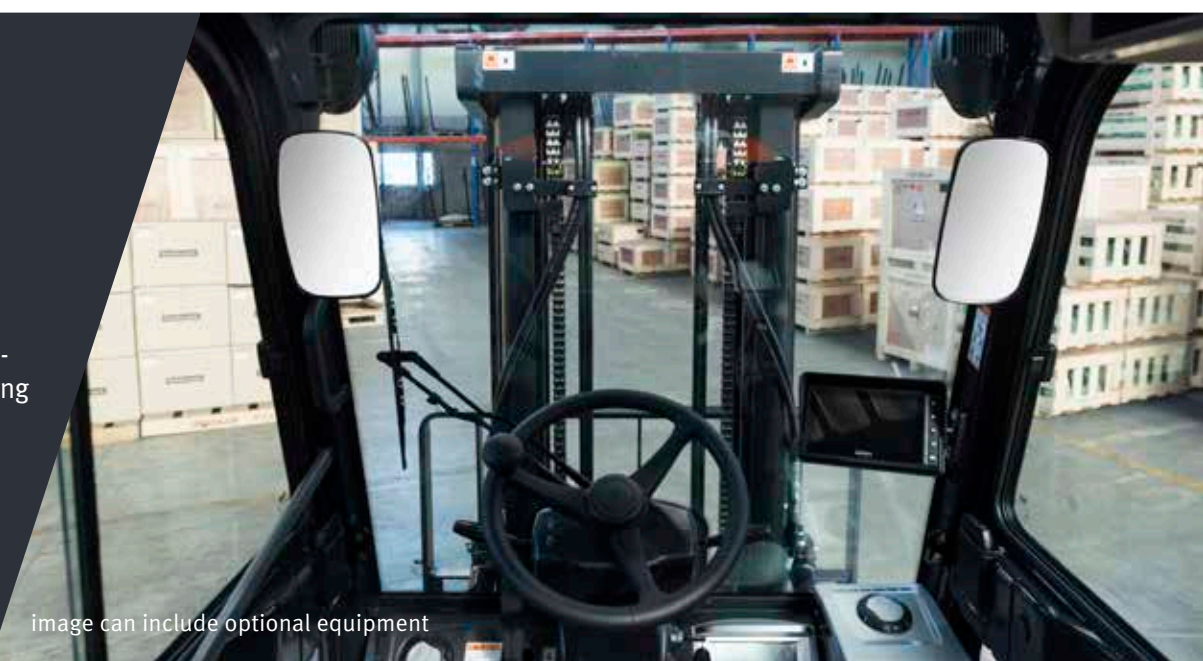


image can include optional equipment

Optimal Ergonomics



Easily readable display

The easily readable, integrated instrument panel provides a clear overview of the truck's status.



Easy entry grab bar and anti slip step plate

Enables easy entry and exit. The wide anti-slip step plates ensure the operator's safety in all weather conditions.

Full cabin **OPTION**

The Doosan cabin provides not only great comfort to the operator but also higher productivity with ergonomically designed features.

The following modular cabins are available:

- A: steel roof with top glass window
- B: steel roof with top glass window and front windshield
- C: steel roof with top glass window, front, and rear windshield



Optimised components location

All components such as the seat, switches, instrument panel, levers and pedals are ergonomically designed and located to provide optimal comfort to the operator.



Steering wheel providing fore-/backwards adjustment

Premium seat **OPTION**

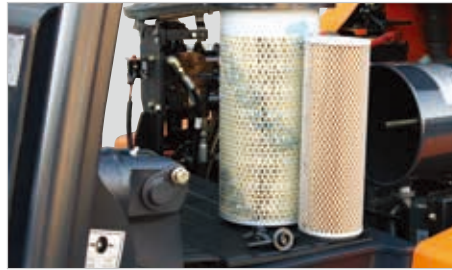
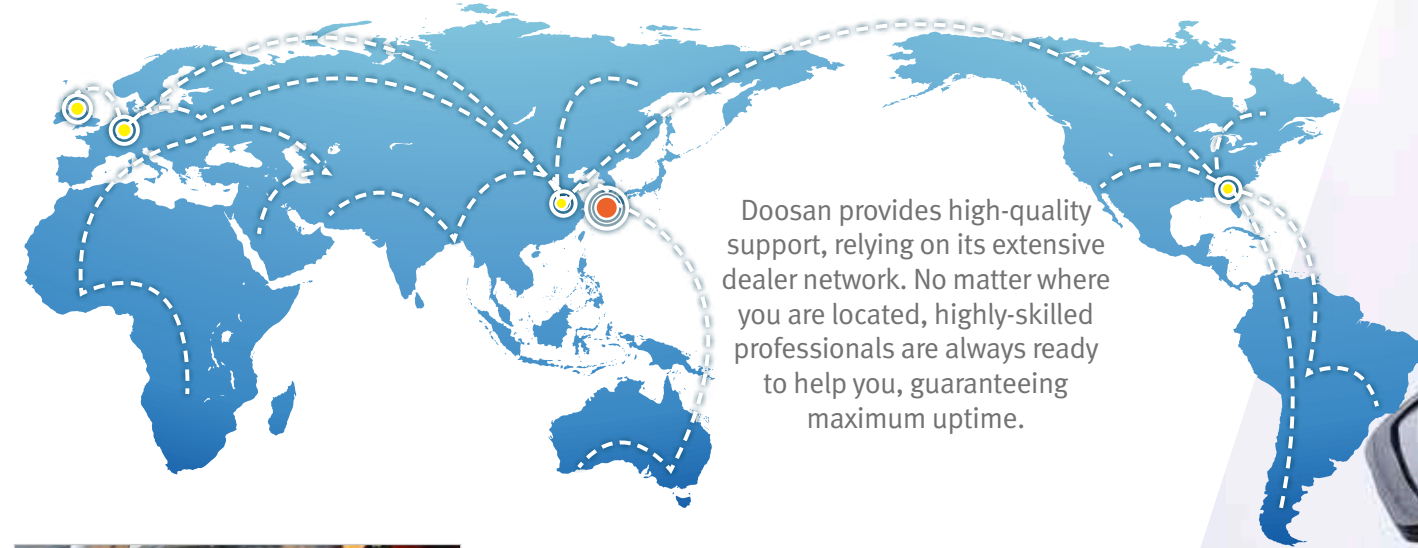
Designed with a low-profile mechanical suspension that significantly reduces vibrations. It helps the operator stay comfortable, no matter how rough the day gets.

Tilt cylinder cover

The tilt cylinders are covered neatly, to avoid any hindrance to the operator. Furthermore, the tilt cylinder cover creates additional space on the floor of the operator compartment.

Excellent reliability & serviceability

Worldwide service network



Easy to service

Optimised location to service battery, air cleaner, filters, dipstick gauges.



Cyclone, dual elements air cleaner

The cyclone type and heavy-duty dual-element air filter cleaning system protects the engine against contamination. This extends the engine's service life and keeps the best engine condition in any environment.



Extra engine protection **OPTION**

The belly plate and engine guard protect the powertrain, engine, fan blades and many components against dirt and debris. This option is especially valuable in environments with very small waste materials (e.g. powder, iron filings, wood shavings, etc.) on the floor.

Locking type gas spring

Hood open angle

The wide-open angle makes it more convenient to service the truck.

Easy removable floor mat and plate

image can include optional equipment

Oil cooled disc brakes

There are 3 to 5 double-sided discs per wheel. Discs are submerged in oil, keeping them cool and limiting wear. The Doosan ODB system is completely enclosed and sealed from outside contaminants protecting the inner workings of the brake system from dirt, water, shrink wrap and broken pallets. Oil cooled disc brakes have a 5 times longer service interval than conventional shoe brakes and are virtually maintenance-free.



Enhanced cooling system

The combination of a large capacity radiator and optimised airflow in the counterweight design enhances the reliability and the durability of the truck and increases uptime in heavy-duty applications.





Lifting your dreams

Main Specifications

		G20E-7	G25E-7
Manufacturer		Doosan	
Engine type		HMC2.4	
Engine power according to DIN ISO1585	kW	45.4	
Rated speed	min-1	2,600	
Torque at 1/min	N•m	179	
Travel speed, loaded/unloaded	km/h	19/20	
Lift speed, loaded/unloaded	mm/s	550/570	540/570
Drawbar pull, loaded (@ 1.6km/h)	kg	1,769	1,809
Gradeability, loaded(@ 1.6km/h)	%	33.6	29.3
Fuel tank capacity	l	51	
Ground clearance, loaded, below mast	mm	115	
Ground clearance, center of wheelbase	mm	143	
Load Distance: center of driveaxle to fork	mm	480	
Wheelbase	mm	1,625	
Service weight	kg	3,585	3,965
Height of seat	mm	1,026	
Length to forkface	mm	2,530	2,595
Overall width	mm	1,170	
Turning radius	mm	2,220	2,265

	G30E-7	G33E-7	G35EC-7	
	Doosan			Engine manufacturer
	HMC2.4			Engine type
	45.4			Engine power according to DIN ISO1585
	2,600			Rated speed
	179			Torque at 1/min
	18/19			Travel speed, loaded/unloaded
	520/570	540/590	530/590	Lift speed, loaded/unloaded
	1,829	1,819	1,759	Drawbar pull, loaded (@ 1.6km/h)
	26.0	24.2	39.6	Gradeability, loaded(@ 1.6km/h)
	51			Fuel tank capacity
	105			Ground clearance, loaded, below mast
	143			Ground clearance, center of wheelbase
	485	485	495	Load Distance: center of driveaxle to fork
	1,700			Wheelbase
	4,390	4,565	4,770	Service weight
	1,026			Height of seat
	2,700	2,730	2,765	Length to forkface
	1,197	1,197	1,255	Overall width
	2,365	2,395	2,420	Turning radius

Standard Features and Optional Extras

SAFETY

Operator Sensing System	Standard features
Mast interlock - tilt, lift and lower	Standard features
2 front LED lights	Standard features
Autotilt levelling	Optional extras
4th lever interlock	Optional extras
Safety light	Optional extras
Back-up alarm	Optional extras
Rear view camera	Optional extras
Ground speed control	Optional extras

ERGONOMICS

Integrated instrument panel	Standard features
Excellent visibility	Standard features
Anti-slip step plate	Standard features
Adjustable steering column	Standard features
Panoramic mirror	Optional extras
Premium seat	Optional extras
Full cabin	Optional extras
Rear grab bar with horn	Optional extras
Steering wheel knob	Optional extras

Remark : This list is based on factory data. Standard or optional can vary for specific countries.

PRODUCTIVITY

High powered, fuel efficient engine	Standard features
Inching pedal	Standard features
Pedal Location (accelerator, brake and inching)	Standard features
Quick disconnect hose couplings	Optional extras

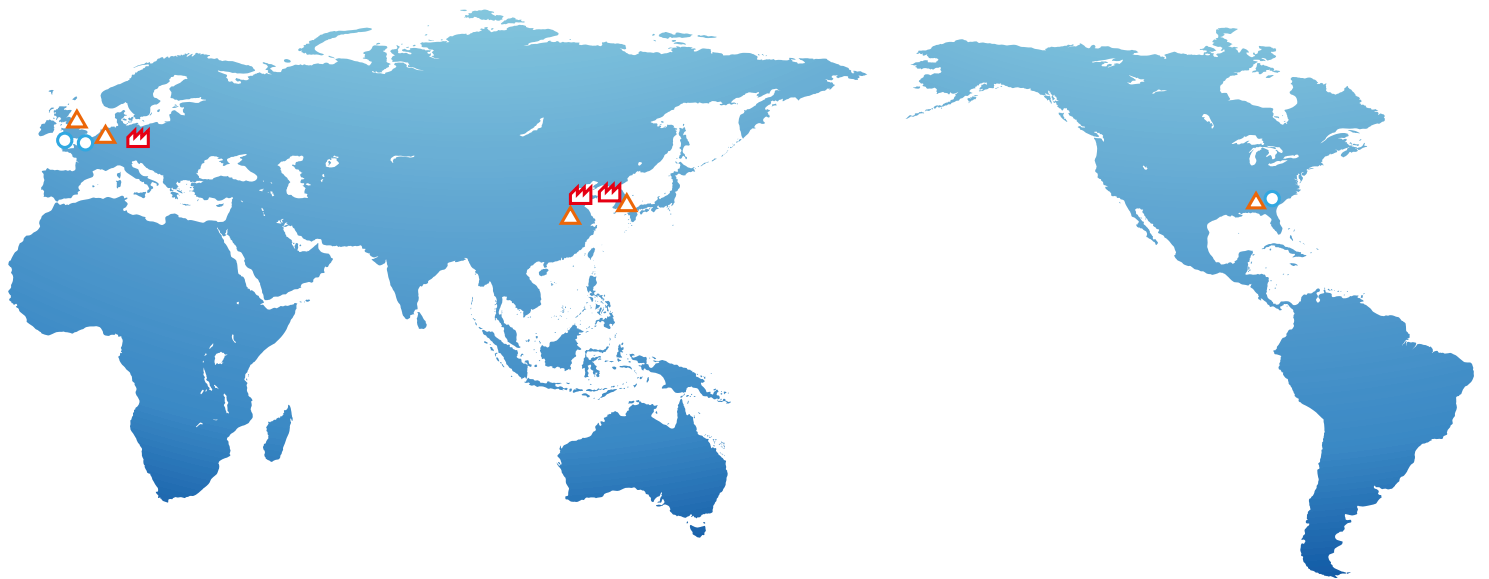
RELIABILITY




Waterproof connectors	Standard features
Dual element air cleaner	Standard features
Pre cleaner	Optional extras
Radiator screen	Optional extras
Vented side panel	Optional extras

SERVICEABILITY

Tool-less side panel / floor plate	Standard features
Junction box	Standard features
Wide hood open angle	Standard features

■ Standard features
■ Optional extras



-  Production Subsidiary
-  Sales Subsidiary
-  Parts Depot Center

DOOSAN

Doosan Industrial Vehicle Europe nv
Europark-Noord 36A
9100 Sint-Niklaas
Belgium
Tel.: +32 3 760 09 87
Fax: +32 3 760 09 89
Website: www.doosan-iv.eu

EUG25E-7-220331V1EN (March 2022)

Authorised Dealer